

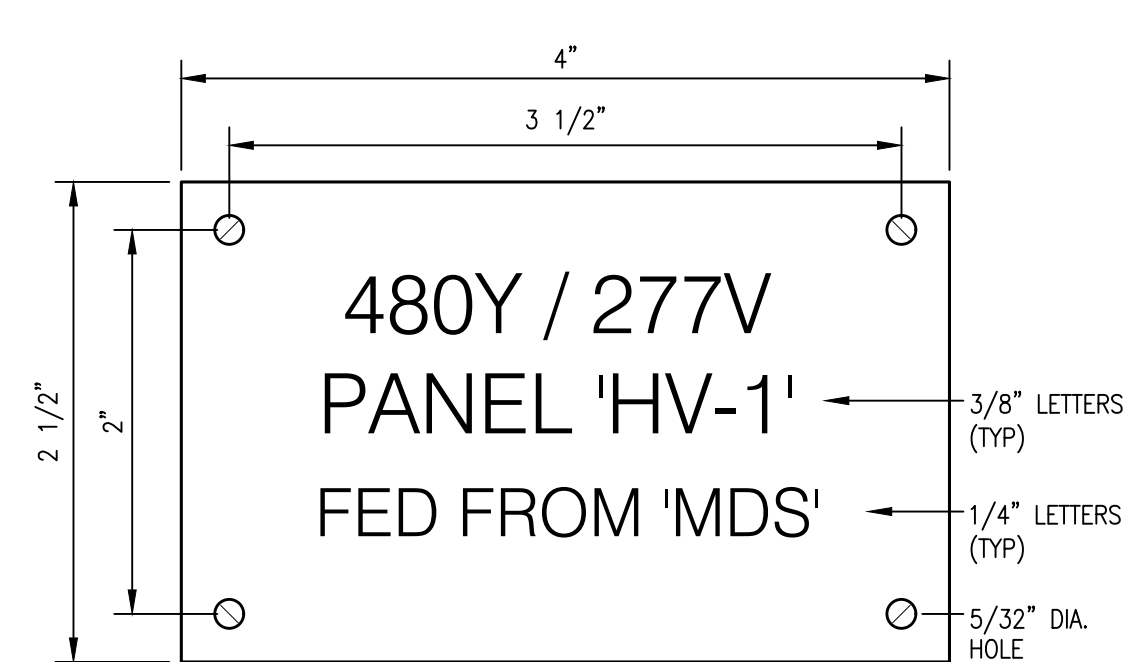
CIRCUIT WIRING	
RP-1	HOME RUN TO PANEL "RP" INDICATES PANEL NO. & "1" INDICATES CIRCUIT NUMBER
	BRANCH CIRCUIT WIRING CONSISTING OF THIN COPPER CONDUCTORS RUN IN CONCEALED RACEWAY. IN AREAS WITH NO CEILING RUN OVERHEAD CONDUCTORS IN EXPOSED EMT. EQUIPMENT GROUNDING CONDUCTOR IS REQUIRED IN ALL CONDUIT/CABLE RUNS. NOTE: CONTRACTOR MAY RUN MC CABLE (WHERE APPROVED BY CODE AND BY OWNER) IN WALLS & ABOVE CEILINGS IN FINISHED AREAS ONLY. CONTRACTOR IS RESPONSIBLE FOR DETERMINING QUANTITY OF CONDUCTORS IN RACEWAY.
	BRANCH CIRCUIT WIRING CONSISTING OF THIN COPPER CONDUCTORS IN APPROPRIATE RACEWAY. RUN UNDERGROUND, IN FLOOR SLAB, OR UNDER FLOOR.
	LOW VOLTAGE OR CONTROL WIRING CONSISTING OF THIN COPPER CONDUCTORS RUN IN EMT CONDUIT.
	BRANCH CIRCUIT WIRING CONSISTING OF CONDUCTORS RUN IN FLEXIBLE METAL CONDUIT TO LIGHTING FIXTURE OR MOTORIZED EQUIPMENT. RUN IN "SEALTITE" FOR ALL PUMP CONNECTIONS. 6'-0" MAX. UNSUPPORTED LENGTH FOR LIGHTING FIXTURES AND 30' FOR OTHER EQUIPMENT. THIS SYMBOL COULD ALSO REPRESENT A FLEXIBLE CORD FINAL CONNECTION TO LIGHT FIXTURES.

WIRING DEVICES	
(ALL WIRING DEVICES SHALL BE AS SPECIFIED OR APPROVED EQUAL SHOP DRAWINGS ARE REQUIRED FOR ALL DEVICES, COLOR OF WIRING DEVICES AS PER ARCHITECT)	
	SINGLE DUPLEX RECEPTACLE NEMA 5-20R (1); HUBBELL #HBL53611 (IVORY) IN TWO GANG BOX
	DUPLEX RECEPTACLE NEMA 5-20R; HUBBELL #HBL53621 (IVORY) IN SINGLE GANG BOX
	DOUBLE DUPLEX RECEPTACLE NEMA 5-20R (2); HUBBELL #HBL53621 (IVORY) IN TWO GANG BOX
	GROUND FAULT CIRCUIT INTERRUPTER DUPLEX RECEPTACLE, NEMA 5-20R; HUBBELL GF53521A (IVORY) IN SINGLE GANG BOX.
	GFCI RECEPTACLE, NEMA 5-20R; HUBBELL #GF53520YA (GRAY) , WITH CARLON #E9UVCRN WEATHERPROOF COVER PLATE. (UL LISTED FOR "WET LOCATIONS" WHILE IN USE.)
	SPECIAL PURPOSE RECEPTACLE, NEMA CONFIGURATION PER DRAWINGS OR AS REQUIRED TO MATCH EQUIPMENT NAMEPLATE REQUIREMENTS.
	SINGLE POLE TOGGLE SWITCH; HUBBELL #1221, 20A-120/277V IN SINGLE GANG BOX
	SINGLE POLE MOTOR RATED TOGGLE SWITCH; HUBBELL #HBL78320, 30A, IN SINGLE GANG BOX
	TWO POLE MOTOR RATED SWITCH; #HBL13920, 30A, W/ ENCLOSURE
	SINGLE POLE MOTOR RATED TOGGLE SWITCH; HUBBELL #HBL78320, 30A IN SINGLE GANG WEATHERPROOF BOX WITH WEATHERPROOF COVER

POWER DISTRIBUTION	
	VARIABLE FREQUENCY DRIVE
	FUSED DISCONNECT SWITCH HEAVY DUTY TYPE. SEE DRAWINGS FOR SIZE, VOLTAGE AND FUSE SIZE. PROVIDE DUAL ELEMENT TIME DELAY TYPE FUS FUSES.
	NON FUSED DISCONNECT SWITCH HEAVY DUTY TYPE. SEE DRAWINGS FOR SIZE AND VOLTAGE.
	COMBINATION STARTER AND C/B DISCONNECT HEAVY DUTY TYPE. SEE DRAWINGS FOR SIZES, HP AND VOLTAGE. FURNISHED AND INSTALLED BY E.C. UNLESS NOTED.
	PANEL BOARD SQUARE "0" # NO FOR 208/120 VOLT 3# FOR BRANCH CIRCUIT PANEL BOARDS # NF FOR 480/277 VOLT 3# FOR BRANCH CIRCUIT PANEL BOARDS
	JUNCTION BOX
	JUNCTION BOX FOR HARD WIRE CONNECTION TO EQUIPMENT
	DRY-TYPE TRANSFORMER, 480-208/120V, 3# , OR AS NOTED ON DRAWINGS
	TRANSFER SWITCH
	POWER POLE

HVAC EQUIPMENT	
	MOTOR OR MOTORIZED EQUIPMENT – SEE DRAWINGS FOR EQUIPMENT POWER REQUIREMENTS (SEE NOTE BELOW)
	WATER HEATER – SEE DRAWINGS FOR EQUIPMENT POWER REQUIREMENTS (SEE NOTE BELOW)
	A/C UNIT – SEE DRAWINGS FOR EQUIPMENT POWER REQUIREMENTS (SEE NOTE BELOW)
	CONDENSER – SEE DRAWINGS FOR EQUIPMENT POWER REQUIREMENTS (SEE NOTE BELOW)
	AIR HANDLER – SEE DRAWINGS FOR EQUIPMENT POWER REQUIREMENTS (SEE NOTE BELOW)
	HEAT PUMP – SEE DRAWINGS FOR EQUIPMENT POWER REQUIREMENTS (SEE NOTE BELOW)
	HEATING ELEMENT – SEE DRAWINGS FOR EQUIPMENT POWER REQUIREMENTS (SEE NOTE BELOW)
	ELECTRIC BASEBOARD HEAT – SEE DRAWINGS FOR EQUIPMENT POWER REQUIREMENTS (SEE NOTE BELOW)
	THERMOSTAT – PROVIDE BACKBOX AND 3/4" EMT TO ABOVE ACCESSIBLE CEILING
NOTE:	VERIFY MCA, FLA, MSCP, VOLTAGE & PHASE WITH VENDOR SHOP DRAWINGS PRIOR TO INSTALLATION OF ELECTRICAL FEEDER TO EQUIPMENT AND PRIOR TO MAKING FINAL CONNECTIONS. VERIFY EXACT EQUIPMENT LOCATIONS WITH M.C. PRIOR TO ROUGH-IN'S.

FIRE ALARM SYSTEM	
	FIRE ALARM SYSTEM SPRINKLER WATER FLOW SWITCH (PROVIDE WIRING AND ADDRESSABLE CONTACT MODULE ONLY.) DEVICE BY OTHERS. (VERIFY QUANTITY OF FLOW SWITCHES)
	FIRE ALARM SYSTEM SPRINKLER VALVE TAMPER SWITCH (PROVIDE WIRING & ADDRESSABLE CONTACT MODULE ONLY.) DEVICE BY OTHERS. (VERIFY QUANTITY OF TAMPER SWITCHES)
NOTE:	NOTE: THE FA SYSTEM INSTALLER IS RESPONSIBLE TO PROVIDE A COMPLETE SET OF SHOP DRAWINGS, INCLUDING MANUFACTURER SPECIFIC VOLTAGE DROP & BATTERY CALCULATIONS, SEQUENCE OF OPERATIONS MATRIX & DEVICE SPECIFICATION SHEETS TO THIS ENGINEER FOR APPROVAL. DRAWINGS SUBMITTED FOR REVIEW & APPROVAL SHALL BEAR THE SEAL OF A PROFESSIONAL ENGINEER LICENSED IN THE STATE OF NY.



## TYPICAL NAMEPLATE DETAIL

SCALE: NONE

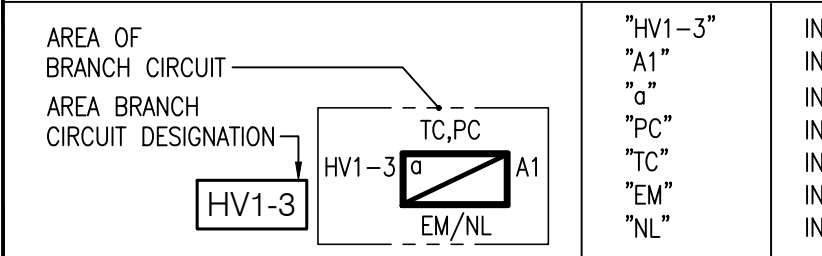
### NOTES:

- REFER TO SPECIFICATIONS FOR ADDITIONAL NAMEPLATE REQUIREMENTS.
- NAMEPLATE TO BE 1/16" THICK WHITE PLASTIC WITH BLACK CENTER LAMINATION. FACE SHALL BE BLACK, ENGRAVED LETTERS SHALL BE WHITE.
- SECURE NAMEPLATE TO SURFACES WITH (4) FLAT HEAD BRASS SCREWS. ADHESIVE CEMENT SHALL NOT BE ALLOWED.
- THIS NAMEPLATE DETAIL IS FOR FACILITIES THAT DO NOT ALREADY HAVE EXISTING PANEL NAMEPLATE NOMENCLATURE & CONTENT REQUIREMENTS; VERIFY NOMENCLATURE REQUIREMENTS WITH AUTHORIZED OWNER REPRESENTATIVE PRIOR TO PURCHASE & CONSTRUCTION.

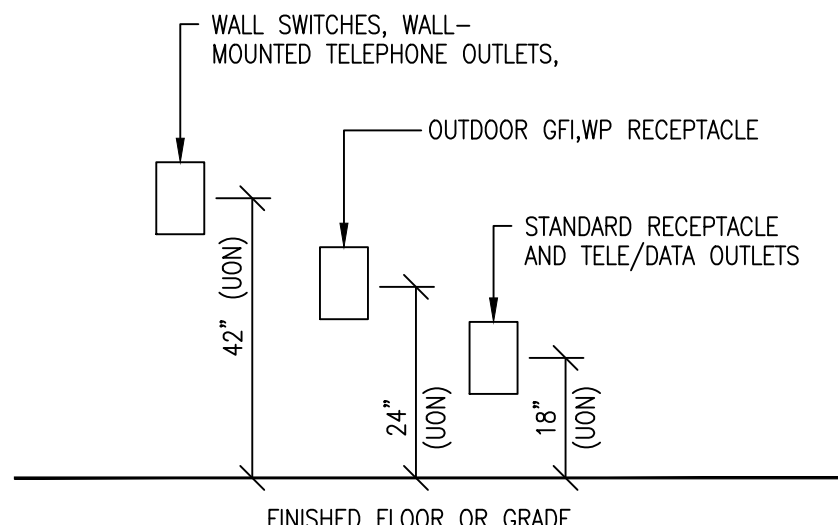
### ELECTRICAL GENERAL NOTES

- ALL BRANCH CIRCUIT WIRING SHALL BE RUN IN EMT CONDUIT, CONCEALED IN WALLS & CEILINGS IN FINISHED AREAS, AND EXPOSED IN UNFINISHED AREAS. MC CABLE MAY BE RUN CONCEALED ABOVE CEILINGS OR IN WALLS WHERE NOT SUBJECT TO PHYSICAL DAMAGE AND ONLY WHERE APPROVED BY THE AUTHORITY HAVING JURISDICTION. TYPE "AC" OR "NM" CABLE SHALL NOT BE USED. AN INSULATED EQUIPMENT GROUNDING CONDUCTOR MUST BE RUN IN ALL BRANCH CIRCUITS.
- ALL PANEL BOARD FEEDERS AND THREE PHASE EQUIPMENT FEEDERS IN EXCESS OF #12 AWG SHALL BE RUN IN EMT, IMC, RGS, OR PVC, & IN ACCORDANCE WITH THE NEC AND THE PROJECT SPECIFICATIONS. CABLE SHALL NOT BE USED.
- ALL EQUIPMENT SHALL BE INSTALLED IN A NEAT AND WORKMANLIKE MANNER, PARALLEL & PERPENDICULAR TO BUILDING STRUCTURE.
- MINIMUM CONDUIT SIZE SHALL BE 3/4", UNLESS NOTED OTHERWISE. MINIMUM WIRE SIZE SHALL BE #12 AWG TYPE THHN/THWN FOR POWER AND #14 THHN/THWN FOR CONTROL. ALL WIRING TO BE COPPER.
- REFER TO MECHANICAL & PLUMBING DRAWINGS FOR EXACT LOCATION OF HVAC & PLUMBING EQUIPMENT REQUIRING ELECTRICAL CONNECTIONS. E.C. SHALL NOT ROUGH IN FOR CONNECTIONS TO EQUIPMENT WITHOUT VERIFYING LOCATIONS ON MECHANICAL & PLUMBING DRAWINGS, AND WITHOUT VERIFYING FINAL LOCATIONS WITH MECHANICAL & PLUMBING CONTRACTOR.
- THE E.C. IS RESPONSIBLE FOR VERIFYING VOLTAGE, PHASE, MCA, AND MSCP REQUIRED FOR ALL HVAC EQUIPMENT PRIOR TO PURCHASING AND INSTALLING CONDUCTORS, BREAKERS, DISCONNECTS AND CONDUIT. VERIFY RATINGS WITH MECHANICAL SUBMITTALS, NAMEPLATES AND DIRECTLY WITH MECHANICAL CONTRACTOR.
- ALL RACEWAYS RUNNING THROUGH BUILDING EXPANSION JOINTS SHALL BE EQUIPPED WITH EXPANSION FITTINGS.
- THE E.C. SHALL REVIEW ALL TRADES' CONDUIT DOCUMENTS TO DETERMINE SPECIFIC MOUNTING LOCATIONS FOR ELECTRICAL EQUIPMENT. COORDINATE EXACT MOUNTING LOCATIONS WITH THE ARCHITECT, OWNER, GENERAL CONTRACTOR OR CONSTRUCTION MANAGER.
- REFER TO ARCHITECTURAL PLANS AND ELEVATIONS FOR MOUNTING HEIGHTS AND EXACT LOCATIONS OF ALL DEVICES. IF THERE IS A CONFLICT BETWEEN ARCHITECTURAL DRAWINGS AND ELECTRICAL DRAWINGS (EXAMPLE: LIGHT FIXTURE LOCATION, SWITCH LOCATION OR HEIGHT OF A DEVICE), THE E.C. SHALL CONTACT THIS ENGINEER FOR DIRECTION PRIOR TO ROUGH-IN.
- ALL WORK SHALL BE PERFORMED IN STRICT ACCORDANCE WITH PUTNAM COUNTY AND THE STATE OF NY ADOPTION OF AND AMENDMENTS TO THE 2017 NATIONAL ELECTRICAL CODE, IFC 2018, IBC 2018, IECC 2018, THE LATEST STATE CODES, AND ALL LOCAL CODES.
- ALL ELECTRICAL EQUIPMENT, INCLUDING, BUT NOT LIMITED TO CONDUIT, WIRE, BOXES, AND FITTINGS, SHALL BE NEW AND FREE OF DEFECTS; SHALL BEAR THE UL LABEL, AND SHALL MEET NEMA AND ANSI STANDARDS.
- ALL WORK AND MATERIALS SHALL BE GUARANTEED FREE FROM DEFECTS FOR A MINIMUM PERIOD OF ONE YEAR UNLESS NOTED OTHERWISE. THE WARRANTY PERIOD SHALL BEGIN AT THE DATE OF BENEFICIAL OCCUPANCY OF THE SPACE UNLESS NOTED OTHERWISE IN THE PROJECT SPECIFICATIONS.
- THE E.C. IS RESPONSIBLE FOR FILING AND PAYING ALL FEES AND OBTAINING NECESSARY PERMITS, CERTIFICATES OF INSPECTION AND SHALL DELIVER ALL CERTIFICATES OF INSPECTION TO OWNER/ CONSTRUCTION MANAGER OR GENERAL CONTRACTOR INCLUDING COPIES WITH MAINTENANCE MANUALS.
- THE COLORS OF ALL RECEPTACLES, SWITCHES, AND DEVICE PLATES SHALL BE AS SELECTED BY THE ARCHITECT. COLORS SPECIFIED ON ELECTRICAL DRAWINGS ARE FOR REFERENCE ONLY.
- E.C. SHALL PROVIDE BACK BOX & 1/2" EMT TO NEAREST ACCESSIBLE CEILING FOR ALL THERMOSTATS. SEE MECHANICAL DRAWINGS FOR EXACT LOCATIONS.
- FINAL LOCATIONS OF ELECTRICAL EQUIPMENT MUST BE COORDINATED WITH HVAC & PLUMBING CONTRACTORS TO INSURE THAT NO PIPING, DUCTWORK, LEAK PROTECTION APPARATUS OR ANY OTHER EQUIPMENT FOREIGN TO THE ELECTRICAL INSTALLATION IS RUN DIRECTLY ABOVE PANELS, SWITCHBOARDS, MCC'S, OR SWITCH GEAR (SEE NEC ARTICLE 110).
- CONFIRM SERVICE ENTRANCE CONDUIT AND CONDUCTOR QUANTITIES AND SIZES WITH THE LOCAL UTILITY PRIOR TO START OF WORK. INCREASE QUANTITIES AND SIZES AS REQUIRED TO MEET LOCAL UTILITY SERVICE AND INSTALLATION REGULATIONS.
- ALL FINAL CONNECTIONS TO VIBRATING OR MOTORIZED EQUIPMENT, INCLUDING GENERATORS & DRY-TYPE TRANSFORMERS, SHALL BE MADE WITH FLEXIBLE METAL CONDUIT SUITABLE FOR THE ENVIRONMENT WHICH IT IS TO BE LOCATED (FMC OR LFMC).
- ALL BRANCH CIRCUITS SHALL CONTAIN DEDICATED NEUTRAL CONDUCTORS. DO NOT SHARE NEUTRAL CONDUCTORS.
- CONFIRM COLD SEQUENCE METERING VERSUS HOT SEQUENCE METERING WITH THE LOCAL UTILITY PRIOR TO START OF CONSTRUCTION.
- ALL RECEPTACLES AND DEVICES SHALL BE FLUSH MOUNTED IN BLOCK OR STUD WALLS. FOR EXISTING BLOCK WALLS, CONTRACTOR SHALL PROVIDE SURFACE MOUNTED DEVICES AND RUN WIRE MOLD AS NECESSARY. COLOR OF WIRE MOLD SHALL BE SELECTED BY ARCHITECT.
- ALL CONDUIT PENETRATIONS THROUGH FIRE RATED WALLS OR FLOORS SHALL BE FIRE-SEALED TO MAINTAIN THE FIRE RATING OF THE WALL OR FLOOR IN ACCORDANCE WITH INTERNATIONAL BUILDING CODE SECTION 713.
- OWNER SHALL FIELD APPLY ARC FLASH WARNING LABELS FOR ALL PANELS, SWITCHBOARDS, MOTOR CONTROL CENTERS, AND METER SOCKETS, AND INDUSTRIAL CONTROL PANELS PER 2017 NEC 110.16.
- FIELD MARK SERVICE EQUIPMENT WITH THE MAXIMUM AVAILABLE FAULT CURRENT PER 2017 NEC 110.24. COORDINATE WITH UTILITY COMPANY TO DETERMINE MAXIMUM AVAILABLE FAULT CURRENT.
- THE ELECTRICAL CONTRACTOR IS RESPONSIBLE FOR SUBMITTING A SERVICE AND METER APPLICATION TO THE LOCAL UTILITY COMPANY.
- CONDUIT INSTALLATION IS TO ACCOUNT FOR 2" OF PERIMETER WALL INSULATION.

## LIGHTING ABBREVIATIONS



NOTE: EM/NL FIXTURES SHALL BE WIRED AHEAD OF LOCAL SWITCHING.



## DEVICE MOUNTING HEIGHT ELEVATION

\* NOTE: ANY MOUNTING HEIGHT SHOWN ON ARCHITECT'S DRAWINGS SHALL SUPERSEDE THOSE SHOWN ABOVE UNLESS IT CONFLICTS WITH CODE REQUIREMENTS.

ABBREVIATIONS					
SYMBOL	DESCRIPTION	SYMBOL	DESCRIPTION	SYMBOL	DESCRIPTION
A, AMP	AMPERES	EM	EMERGENCY	L	LOADING TYPE/LOAD
AA	AMBIENT AIR	EMT	ELECTRICAL METALLIC TUBING	LA	LOCAL LIGHTING SURGE ARRESTOR
AC	ALTERNATING CURRENT	EOL	END OF LINE DEVICE	LAN	LOCAL AREA NETWORK
ACR	ABOVE COUNTER RECEPTACLES	EPO	EQUIPMENT POWER OFF	LIT	LONG TIME LIGHTING
AF	AMPERE FRAME (CIRCUIT BREAKER)	EQ	EQUAL	LTC	LIGHTING
AFF	ABOVE FINISH FLOOR	EQ	EQUIPMENT	LP	LIGHTING PANEL
AFG	ABOVE FINISH GRADE	ERMS	ENERGY REDUCTION MAINTENANCE SWITCH	LSI	LONG TIME, SHORT TIME, INSTANTANEOUS.
AFU	AMPERE FUSE	EW	ELECTRIC WATER COOLER	LSIG	LONG TIME, SHORT TIME, INSTANTANEOUS. GROUND FAULT.
AHU	AIR HANDLING UNIT	F	FUSE	M	METER
AIC	AMPERE INTERRUPTING CAPACITY	FA	FIRE ALARM	M.C.	MECHANICAL CONTRACTOR
AL	ALUMINUM	FA	FORCED AIR	MCB	MAIN CIRCUIT BREAKER
ARCH	ARCHITECT	FAAP	FIRE ALARM ANNUNCIATOR PANEL	MCC	MOTOR CONTROL CENTER
AT	AMPERE TRIP (CIRCUIT BREAKER)	FACP	FIRE ALARM CONTROL PANEL	MCCB	MOLDED CASE CIRCUIT BREAKER
ATS	AUTOMATIC TRANSFER SWITCH	FC	FIRE COMMAND CENTER	MCP	MOTOR CIRCUIT PROTECTOR
AUX	AUXILIARY	FCF	FIRE COMMAND CENTER	MEP	MECHANICAL, ELECTRICAL, PLUMBING
A/V	AUDIO VISUAL	FCU	FAN COIL UNIT	MFR	MECHANICAL MANUFACTURER
AWG	AMERICAN WIRE GAUGE	FDR	FEEDER	MH	MANHOLE
BAS	BUILDING AUTOMATION SYSTEM	FLA	FULL LOAD AMPERES	MI	MINERAL INSULATED
BWP	BREAKER	FLB	FAN POWERED BOX	MISC	MISCELLANEOUS
BLDG	BUILDING	FS	FUSED SWITCH	MLO	MAIN LUGS ONLY
BYP, BP	BYPASS	F/T	FEET	MNT	MOUNTED
C	CONDUIT – RACEWAY	FU	FUSES	MTO	MOUNTING
CATV, TV	CABLE TELEVISION	FUT	FUTURE	MTS	MANUAL TRANSFER SWITCH
CB, CB	CIRCUIT BREAKER	FV	FULL VOLTAGE REVERSIBLE	FVNR	FULL VOLTAGE NON-REVERSIBLE
CCV	CLOSED CIRCUIT TELEVISION	G	GROUND OR GROUNDING	G	GROUND OR GROUNDING
CCT	CIRCUIT	GND, GRD	GROUND OR GROUNDING	N	NEUTRAL/NORMAL
CLG	CEILING	C	CENTERLINE	N.C.	NORMALLY CLOSED
COAX	COAXIAL CABLE	COL	COLUMN	N.O.	NORMALLY OPEN
C/L	CENTERLINE	COMM	COMMUNICATIONS	NEC	NATIONAL ELECTRICAL CODE
CO	CONTROL	CON	CONDUIT	NELC	NOT IN CONTRACT
CP	CENTRAL PROCESSING UNIT	CPD, GP	GROUND FAULT CIRCUIT INTERRUPTER	NFSS	NON-FUSED SAFETY SWITCH
CR	CARD READER	GRC	GENERATOR PARALLELING SWITCHGEAR	NL	NIGHT LIGHT
CS	CONTROL SWITCH	GR	GROUND FAULT CIRCUIT INTERRUPTER	NTS	NOT TO SCALE
CU	COPPER	HD	HAND HOLE	OFCD	OWNER FURNISHED, CONTRACTOR INSTALLED
CUH	CURRENT TRANSFORMER	HKA	HAND-OFF-AUTOMATIC SWITCH	OS	OCCUPANCY SENSOR
CT	DEDICATED	HP	HORSEPOWER	P	POLE
DC	DIRECT CURRENT	HZ	HERTZ	PB	PUSHBUTTON/PULLBOX
DDC	DIRECT DIGITAL CONTROL	I/INST	INSTANTANEOUS	IG	ISOLATED GROUND
DEMO	DEMONSTRATION	IMC	INTERMEDIATE METAL CONDUIT	PC	PHOTOCELL
DIA	DIAMETER	JB, JBOX	JUNCTION BOX	POU	POWER DISTRIBUTION UNIT
DIST	DISTRIBUTION	K	KEY LOCK (KEY INTERLOCK SCHEME)	PF	POWER FACTOR
DWG	DRAWING	K	KILOAMPERES	PH, φ	PHASE
DN	DOWN	KMIL	THOUSAND CIRCULAR MILS	PMS	POWER MONITORING SYSTEM
(E)	EXISTING TO REMAIN	KVA	KILOVOLT AMPERES	PNL	PANEL OR PANELBOARD
E.C.	ELECTRICAL CONTRACTOR	KW	KILOWATT	PVC	POLYVINYL CHLORIDE
EF	EXHAUST FAN	KV	KILOVOLTS	PWR	POWER
ELEV	ELEVATOR	KVAR	KVA REACTIVE	PR	PRIMARY
				PS	POWER SUPPLY
				PT	POTENTIAL TRANSFORMER

## WAREHOUSE LIGHTING FIXTURE SCHEDULE

SYMBOL	TYPE	LAMPS		MOUNTING	CATALOG NUMBER	REMARKS
		NO.	INPUT WATTS			
	A	1	321	LED	CABLE/CHAIN	T1 LIGHTING # T1-HBLED_U_321-40-OS
	B	1	31	LED	SURFACE/CHAIN	HUBBELL # MPS4-35MW-OW-EU
	X1	1	2.5	LED	WALL	BEST LIGHTING # LEDCXEU-2-R-W-RC
	X2	1	2.5	LED	WALL	BEST LIGHTING # RHLED 2 PWP MV HL

### SITE LIGHTING SCHEDULE

SYMBOL	KEY	FIXTURE MANUFACTURER	FIXTURE MODEL	FIXTURE DESCRIPTION	FIXTURE MOUNTING HEIGHT	LAMP	OPTICS	LUMENS	FIXTURE CATALOGUE NO.	POLE MANUFACTURER	POLE DESCRIPTION	POLE LENGTH	POLE CATALOGUE NO.	REMARKS
	A	LITHONIA LIGHTING	RSX2	TWIN MOUNTED FIXTURE COLOR – BLACK	40'-0"	114W LED	FORWARD THROW	14,587 (PER FIXTURE)	RSX2-LED-P2-30K-R4	LITHONIA LIGHTING	ROUND TAPERED STEEL; COLOR – BLACK	37'-0"	RTS-37-6-SB-DM28AS--V0-DBLXD	POLE TO BE MOUNTED ON 3' HEIGHT EXPOSED CONCRETE BASE
	B	LITHONIA LIGHTING	RSX2	TWIN MOUNTED FIXTURE COLOR – BLACK	40'-0"	114W LED	FORWARD THROW	14,587	RSX2-LED-P2-30K-R3-EGS	LITHONIA LIGHTING	ROUND TAPERED STEEL; COLOR – BLACK	37'-0"	RTS-37-6-SB-DM28AS--V0-DBLXD	POLE TO BE MOUNTED ON 3' HEIGHT EXPOSED CONCRETE BASE
	C	LITHONIA LIGHTING	RSX2	TWIN MOUNTED FIXTURE COLOR – BLACK	40'-0"	114W LED	FORWARD THROW	14,587	RSX2-LED-P2-30K-R2-EGS	LITHONIA LIGHTING	ROUND TAPERED STEEL; COLOR – BLACK	37'-0"	RTS-37-6-SB-DM28AS--V0-DBLXD	POLE TO BE MOUNTED ON 3' HEIGHT EXPOSED CONCRETE BASE
	D	LITHONIA LIGHTING	RSX2	TWIN MOUNTED FIXTURE COLOR – BLACK	30'-0"	114W LED	TYPE 5	16,078	RSX2-LED-P2-30K-R5-EGS	LITHONIA LIGHTING	ROUND TAPERED STEEL; COLOR – BLACK	27'-0"	RTS-27-6-SB-DM28AS--V0-DBLXD	POLE TO BE MOUNTED ON 3' HEIGHT EXPOSED CONCRETE BASE
	E	LITHONIA LIGHTING	RSX2	SINGLE MOUNTED FIXTURE COLOR – BLACK	30'-0"	114W LED	TYPE 3	13,463	RSX2-LED-P2-30K-R3-EGS	LITHONIA LIGHTING	ROUND TAPERED STEEL; COLOR – BLACK	27'-0"	RTS-27-6-SB-DM19AS--V0-DBLXD	POLE TO BE MOUNTED ON 3' HEIGHT EXPOSED CONCRETE BASE
	F	LITHONIA LIGHTING	RSX2	SINGLE MOUNTED FIXTURE COLOR – BLACK	30'-0"	114W LED	FORWARD THROW	15,861	RSX2-LED-P2-30K-R4	LITHONIA LIGHTING	ROUND TAPERED STEEL; COLOR – BLACK	27'-0"	RTS-27-6-SB-DM19AS--V0-DBLXD	POLE TO BE MOUNTED ON 3' HEIGHT EXPOSED CONCRETE BASE
	G	LITHONIA LIGHTING	RSX2	SINGLE MOUNTED FIXTURE COLOR – BLACK	30'-0"	114W LED	TYPE 2	14,587	RSX2-LED-P2-30K-R2-EGS	LITHONIA LIGHTING	ROUND TAPERED STEEL; COLOR – BLACK	27'-0"	RTS-27-6-SB-DM19AS--V0-DBLXD	POLE TO BE MOUNTED ON 3' HEIGHT EXPOSED CONCRETE BASE
	H	LITHONIA LIGHTING	RSX2	SINGLE MOUNTED FIXTURE COLOR – BLACK	30'-0"	114W LED	TYPE 5	16,072	RSX2-LED-P2-30K-R5	LITHONIA LIGHTING	ROUND TAPERED STEEL; COLOR – BLACK	27'-0"	RTS-27-6-SB-DM19AS--V0-DBLXD	POLE TO BE MOUNTED ON 3' HEIGHT EXPOSED CONCRETE BASE
	J	LITHONIA LIGHTING	RSX2	WALL-MOUNTED SCONCE; COLOR – BLACK	30'-0"	114W LED	FORWARD THROW	15,861	RSX2-LED-P2-30K-R4-WM	-	-	-	-	REFER TO ARCHITECTURAL DRAWINGS FOR EXACT LOCATIONS
	K	LITHONIA LIGHTING	RSX2	WALL-MOUNTED SCONCE; COLOR – BLACK	35'-0"	114W LED	FORWARD THROW	15,861	RSX2-LED-P2-30K-R4-WM	-	-	-	-	REFER TO ARCHITECTURAL DRAWINGS FOR EXACT LOCATIONS
	L	LITHONIA LIGHTING	RSX2	WALL-MOUNTED SCONCE; COLOR – BLACK	30'-0"	114W LED	TYPE III	6,933	RSX2-LED-P2-30K-R3-WM	-	-	-	-	REFER TO ARCHITECTURAL DRAWINGS FOR EXACT LOCATIONS

### CURRENT ISSUE:

### PERMIT

### ELECTRICAL DRAWING LIST

DWG NO.	DRAWING TITLE	A	O
E1.0	ELECTRICAL SYMBOLS, NOTES & ABBREVIATIONS	<input checked="" type="radio"/>	<input checked="" type="radio"/>
E2.0	WAREHOUSE LIGHTING PLANS	<input checked="" type="radio"/>	<input checked="" type="radio"/>
E3.0	WAREHOUSE POWER PLANS	<input checked="" type="radio"/>	<input checked="" type="radio"/>
E4.0	ELECTRICAL ONE LINE DIAGRAM	<input checked="" type="radio"/>	<input checked="" type="radio"/>
E5.0	ELECTRICAL SCHEDULES	<input checked="" type="radio"/>	<input checked="" type="radio"/>
E6.0	ELECTRICAL DETAILS	<input checked="" type="radio"/>	<input checked="" type="radio"/>
E7.0	ELECTRICAL SPECIFICATIONS	<input checked="" type="radio"/>	<input checked="" type="radio"/>
EN1.0	ENERGY COMPLIANCE	<input checked="" type="radio"/>	<input checked="" type="radio"/>
ESP1.0	ELECTRICAL SITE LIGHTING PLAN	<input checked="" type="radio"/>	<input checked="" type="radio"/>

DESIGNER / BUILDER

# ARCO

## DESIGN/BUILD INDUSTRIAL

44 SOUTH BROADWAY, SUITE 1003  
WHITE PLAINS, NY 10601  
P: 914.821.5535 F: 914.306.8010

# ADBI

## DESIGN SERVICES

### PROJECT TITLE

## LINCOLN EQUITIES - NY-131- BLDG A

## NY-312 & PUGSLEY RD, SOUTHEAST, NY 10509

### ARCHITECT

ADBI / DESIGN SERVICES LLC  
44 SOUTH BROADWAY, SUITE 1003  
WHITE PLAINS, NY 10601

### CIVIL ENGINEER

LANGAN ENGINEERING  
300 KIMBALL DRIVE  
PARSIPPANY, NJ 07054

### STRUCTURAL ENGINEER

SMITH/ROBERTS AND ASSOCIATES, INC.  
6501 BLUFF RD.  
INDIANAPOLIS, INDIANA 46217

### MECHANICAL ENGINEER